



THE WATERFORD

Holland Homes

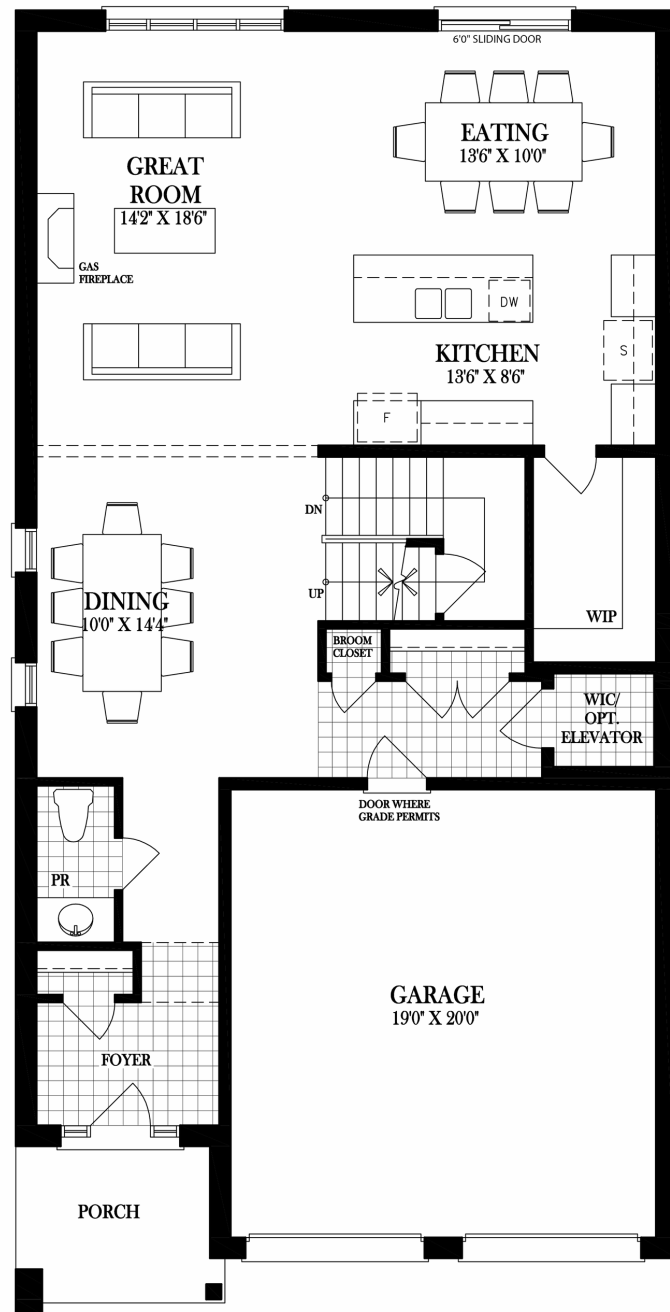
An exclusive enclave of elegant Detached Homes nestled in a beautiful setting at Harmony Road and King Street East. Put down roots in this exquisite community surrounded by open green spaces and vibrant amenities.

4004 SQ. FT.
Model: 36 -4B

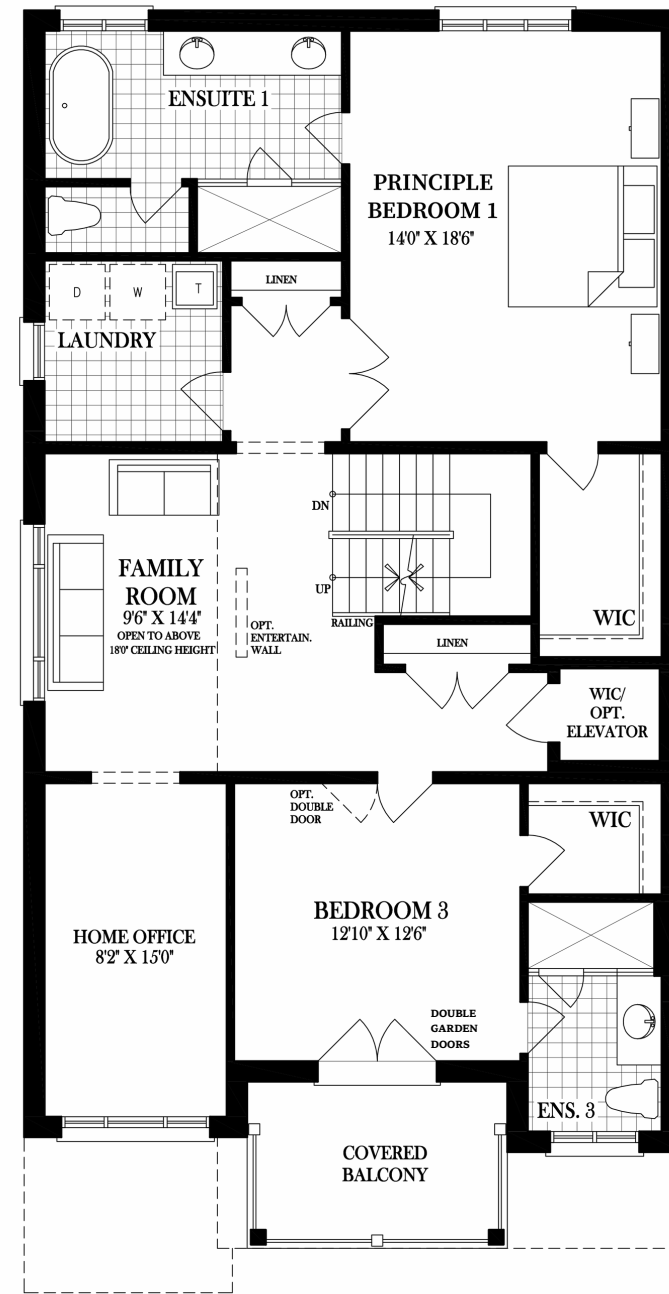


Learn more at
www.kingscrosscommunity.ca

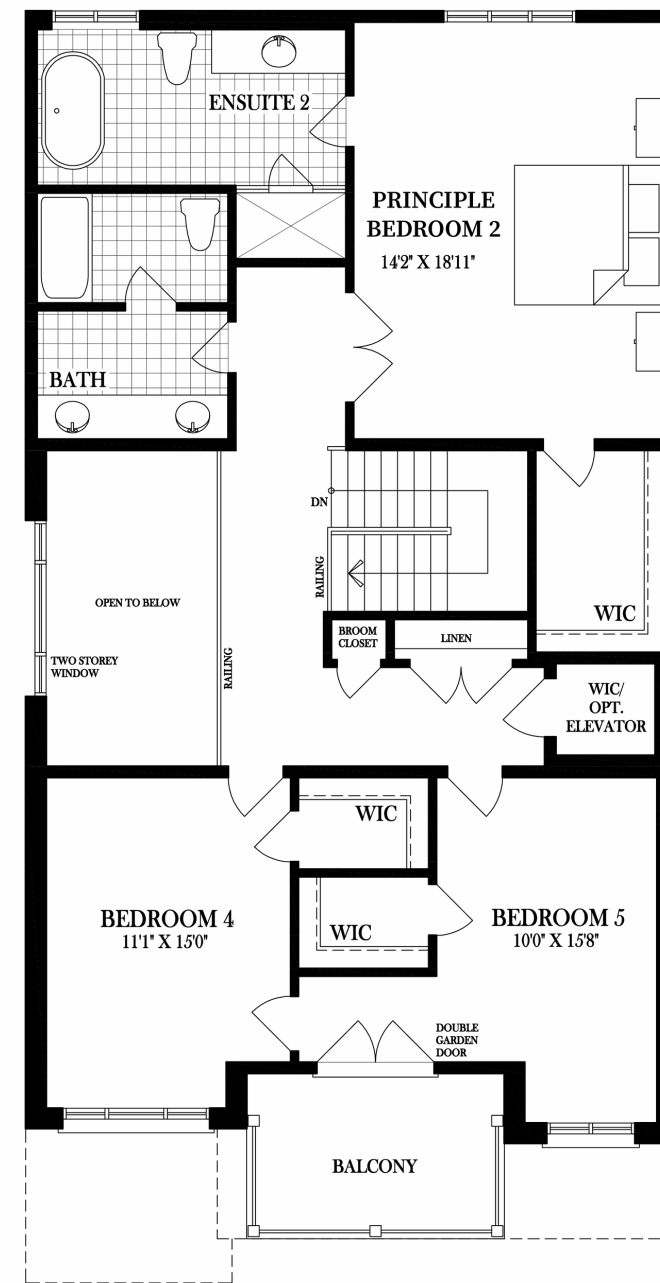




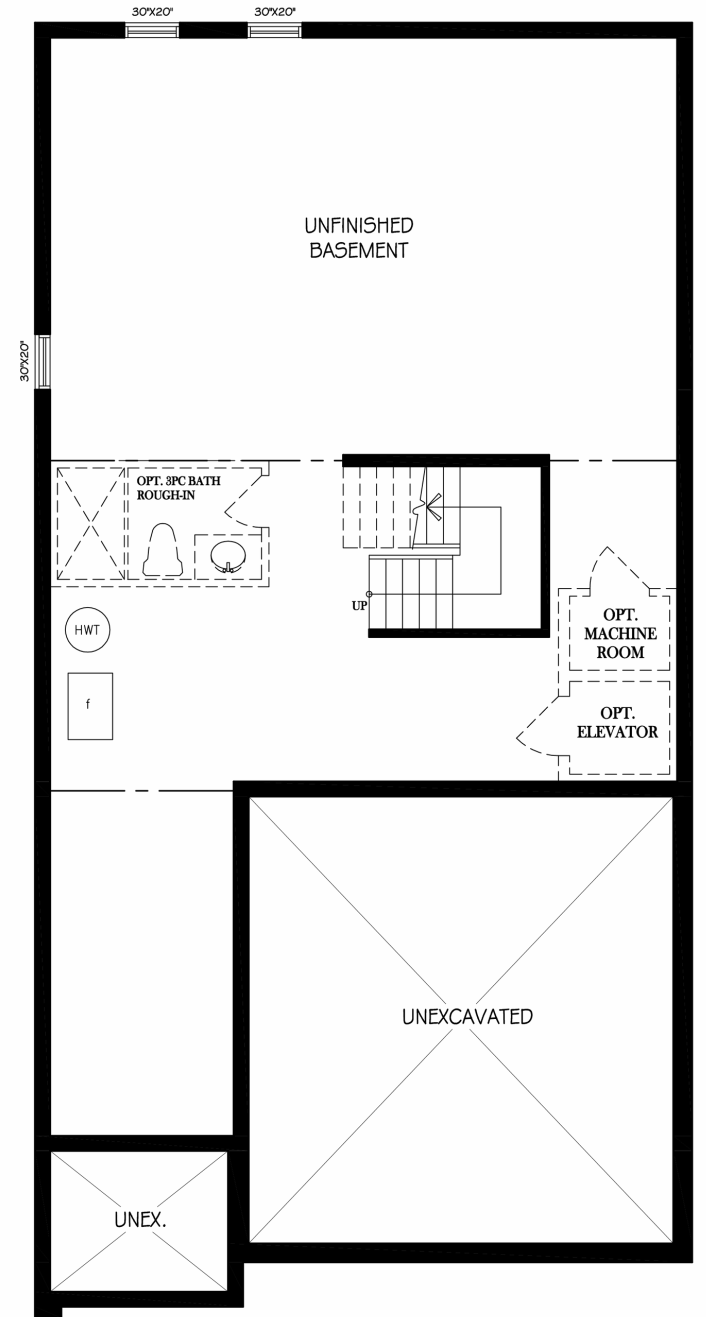
Ground Floor



Second Floor - Elev B



Third Floor - Elev B



Basement

LAND & GATE
REAL ESTATE INC., BROKERAGE

PATRICIA BEGLEY
Broker



CONTACT
(905) 240 -9200



OFFICE
20 Elgin St, E, Oshawa



WEBSITE
www.kingscrosscommunity.ca

HOLLAND HOMES